

Project

GEOGRAPHICAL INFORMATION SYSTEM FOR ICAM

I+D+i
GIZC
GESTIÓ INTEGRADA
DE LA ZONA COSTANERA

Axis **Research aimed at technological development**

Summary

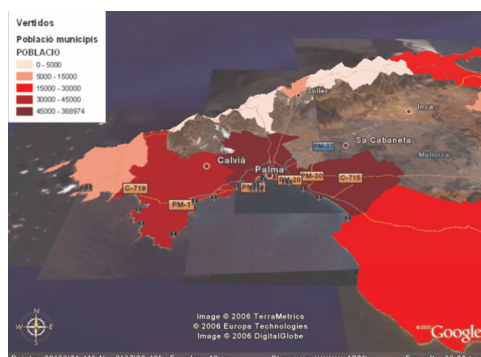
This project aims to design and implement an interoperable Geographical Information System (SIG), constituting a technological instrument at the service of IMEDEA.

Various bodies will actively participate in the development of SIG, including public and private bodies such as ministries, councils, associations and businesses, on three levels: providing updated information on their specific area of responsibility; suggesting the development of data-analysing processes; and facilitating the publication of territorial information.

All of this information will be made available to the public on a website, with search tools and geographical information about the Balearic coastline.

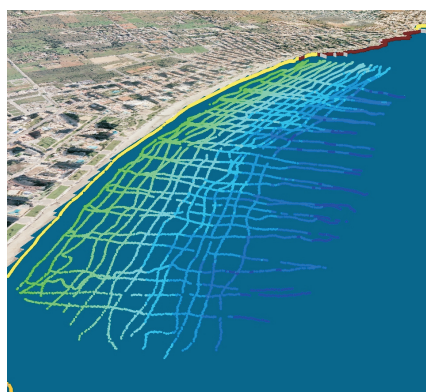
Actions

-Create a basic instrument for the inventory, analysis and modelling of the Balearic coastline for research purposes, but also directed at aspects of environmental and coastal management, incorporating it as a support instrument for the Balearic Integrated Coastal Area Management (ICAM) model; aiding planners and managers and contributing to knowledge about the territory.



Different levels that can be seen with Google Earth

Bathymetry Cala Millor



Depth data for Cala Millor beach

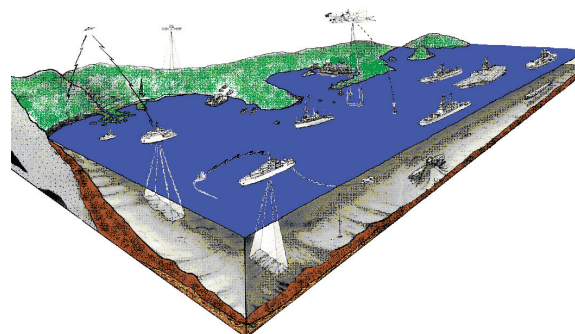


Diagram of data acquisition for SIG

Applications

Research, administration and enterprise

Researchers, administration and enterprise will all be able to take advantage of SIG. Thus, users will be able to consult information available, integrate and incorporate it into their studies and so generate new services and functions for the system.

Contact

Co-principal investigator

Maurici Ruiz
maurici.ruiz@uib.es

Team research

Marta Fuster
marta.fuster@uib.es

Project web

www.imedea.uib.es/goifis/OPERACIONAL



Govern de les Illes Balears
Conselleria d'Economia,
Hisenda i Innovació
Direcció General de Recerca,
Desenvolupament Tecnològic i Innovació

I+D+i GIZC

Axis

Project Geographical information system for ICAM

Principal Investigator

Prof. Joaquín Tintoré
e-mail: jtintore@uib.es

IMEDEA

C/Miquel Marquès, 21
07190 Esporles, Mallorca
Illes Balears, ESPAÑA
Tlf: +34 971 611 714
Fax: +34 971 611 761

www.imedea.uib.es