

Project

COMPARATIVE STUDY OF COASTAL URBAN DEVELOPMENT IN ISLANDS

I+D+i
GIZC
GESTIÓ INTEGRADA
DE LA ZONA COSTANERA

Axis
Bloc 1.2
Thematic area

Disciplinary research
Society, economy and culture
Population, territory and land-uses



Govern de les Illes Balears
Conselleria d'Economia, Hisenda i Innovació
Direcció General de Recerca, Desenvolupament Tecnològic i Innovació

Summary

An analysis of the current situation and evolution of urban development in the Balearic Islands when considering the implementation of true ICAM, especially since land is a limited resource in a group of islands.

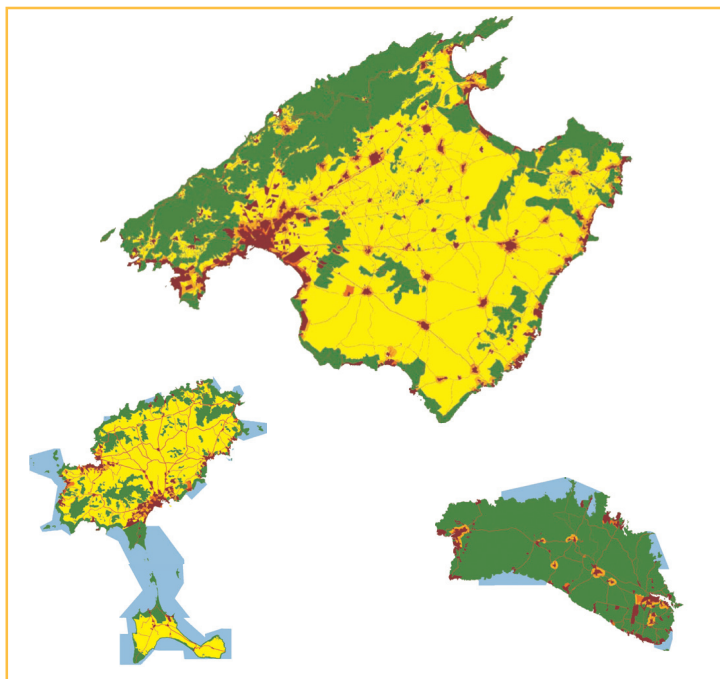
A study, from the point of view of urban planning and development, of the transformation that the territory has undergone, together with a comparative analysis of the current state of urban development on the islands and in other regions, is vital for gaining the scientific knowledge necessary to develop adequate tools to give technical support to those responsible for the area, helping them to manage this resource known as 'land'.

Actions

-Carry out an analysis of the number of developments and buildings in the coastline.

-Structure and systematise data on urban development and planning and real occupation of Balearic territory.

-Compare with other regions of similar social and/or physical characteristics.



- Transformed land (urban or urbanisable)
- Road infrastructure
- Urbanisable ground not transformed
- Rustic ground potentially urbanisable
- Rustic ground potentially constructible
- Protected rustic ground
- Isobath (1000 m)

Applications

Research

The creation of a Geographical Information System with the results of this analysis will constitute a very interesting reference work to then carry out future studies related to urban development in the Balearic Islands.

Administration

This analysis will undoubtedly produce conclusions that will give rise to important reflections and recommendations for administrative bodies responsible for matters in the management of land, town planning, etc.

Enterprise

The sectors related to property development, goods distribution, access to telecommunications, etc. would find in this tool an important source of information for future activities.

Contact

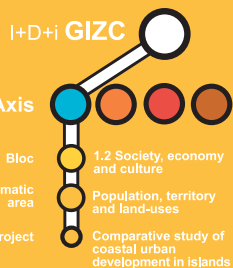
Co-principal investigator

Team research

Luís Corral
llcorral@arquired.es

Pedro J. Carretero Tomeu Alcover
pedrocar@arquired.es

<http://www.costabalearsostenible.es>



Principal Investigator

Prof. Joaquín Tintoré

e-mail: jtintore@uib.es

IMEDEA

C/ Miquel Marqués, 21
07190 Esporles, Mallorca
Illes Balears, ESPAÑA

Tlf: +34 971 611 714
Fax: +34 971 611 761

www.imedea.uib.es

