

Project

ANTECEDENTS OF ENVIRONMENTAL INFORMATION IN THE BALEARIC ISLANDS

I+D+i
GIZC
GESTIÓ INTEGRADA
DE LA ZONA COSTANERA

Axis
Bloc 1.3

Disciplinary research

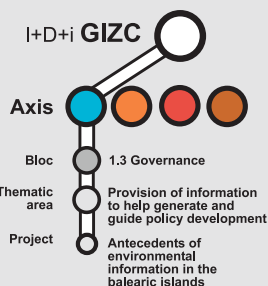
Governance

Thematic area

Provision of information to help generate and guide policy development



Govern de les Illes Balears
Conselleria d'Economia,
Hisenda i Innovació
Direcció General de Recerca,
Desenvolupament Tecnològic i Innovació

**Summary**

To implement an integrated management of our coastline, it is vital to have available a complete database on environmental subjects and the biodiversity of the Balearic Islands and the western Mediterranean.

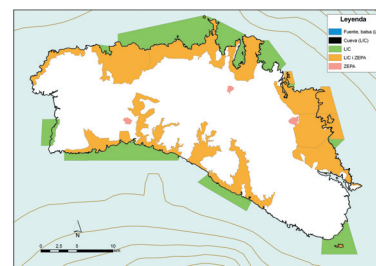
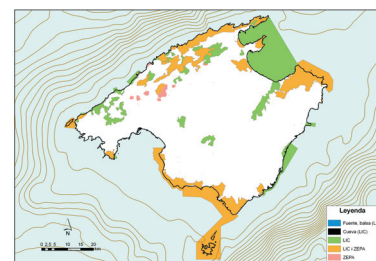
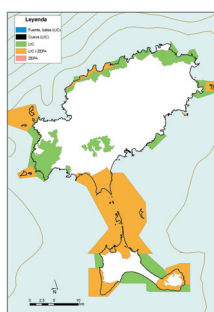
This project aims to carry out an historical synthesis of environmental information in the Balearic Islands, with the intention of creating one single database with all management documents that give information on the state of the Balearic environment, whether this is through monitoring certain species of flora and fauna, monographic works on certain natural aspects or protected areas, or information referring to geographical, geological, or geomorphologic aspects, aspects of diversity and environmental quality.

Actions

-Possess a unified database with most of the environmental information referring to the Balearic Islands to have a quick and complete source of information that can help in achieving a certain sustainability of our natural surroundings.

-Give this database public use and promote knowledge of the environment in Balearic society.

Spring, pond (SACs)
Cave
SACs
SACs and SPA
SPA



Balearic surface area under the protection of EU directives in terms of birds and habitats

Applications**Research**

The database generated through this project will constitute a valuable source of information for researchers, students and teachers (in primary, secondary and higher education) in the field of environmental management. A database of these characteristics constitutes an efficient reference tool that would give rigour to the selection of indicators for implementation studies of ICAM initiatives.

Administration

The availability of a database with all publications and works will be of utmost use in comparing and contrasting works on technical support, assessment of environmental impact, geophysical studies, etc.

Principal Investigator

Prof. Joaquín Tintore
e-mail: jtintore@uib.es

IMEDEA

C/Miquel Marqués, 21
07190 Esporles, Mallorca
Illes Balears, ESPAÑA
Tlf: +34 971 611 714
Fax: +34 971 611 761

www.imedeia.uib.es

Contact**Co-principal investigators**

Pau Balaguer
vieapbh4@uib.es