

Project

DEMONSTRATION OF RAPID ENVIRONMENTAL ASSESSMENT ABILITIES IN THE BALEARIC ISLANDS

I+D+i
GIZC
GESTIÓ INTEGRADA
DE LA ZONA COSTANERA

Axis
Bloc 1.1
Thematic area

Disciplinary research
Environment
Water quality and public safety in the coastal zone



Summary

Through a series of experimental 'in situ' measurements of hydrographical fields in an area hypothetically affected by an accidental spillage of crude oil, this project aims to determine whether, through a limited number of variables that can be measured and handled easily, we can gain a rapid environmental assessment.

The rapid environmental assessment will take place to the south of Majorca, on 12th May 2005, in fifteen stations with CTD (conductivity, temperature, depth) devices for water columns in a period of thirteen hours.

Actions

-Assess IMEDEA's ability to carry out a rapid environmental assessment of an area of Balearic coast and determine the variables to be used to gain such an assessment.

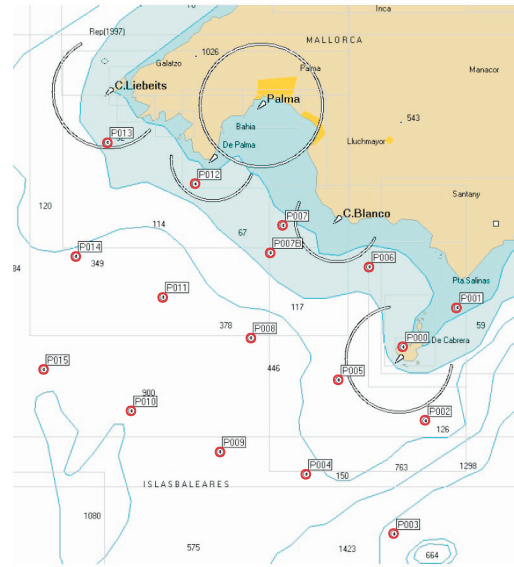


Cabrera islands



IMEDEA vessel equipped with 250m cable for an experiment

-Prepare the necessary instrumentation to acquire and pre-handle data for any type of intervention.



Sampling points

Applications

Research

The establishment of essential environmental variables allowing us to carry out a rapid coastal assessment is key in the development of rapid environmental assessment studies by research groups from other coastal regions, both in the Mediterranean and elsewhere.

Administration

Rapid environmental assessment is an increasingly frequent requirement in our society, where it is essential to have a proven ability to respond in almost real time to potential emergencies, such as spillages in the sea, accidents, shipwrecks, natural catastrophes, etc.

Enterprise

These data will be useful for businesses operating in coastal areas, whether this involves water sports, navigation or maritime transport.

Contact

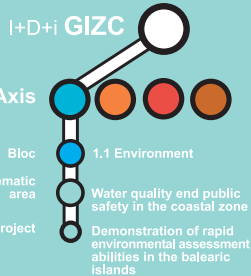
Co-principal investigator

Team research

Benjamin Casas
benjamin.casas@uib.es

Joaquín Tintoré
jtintore@uib.es

Guillermo Vizoso
g.vizoso@uib.es



Principal Investigator

Prof. Joaquín Tintoré
e-mail: jtintore@uib.es

IMEDEA

C/ Miquel Marqués, 21
07190 Esporles, Mallorca
Illes Balears, ESPAÑA
Tlf: +34 971 611 714
Fax: +34 971 611 761

www.imedea.uib.es